

# 2008 **WISE** WOMEN IN SCIENCE & ENGINEERING

## **REWU** RESEARCH EXPERIENCE FOR WOMEN UNDERGRADUATES

### Offers Summer Research Opportunities in:

- Biology
- Chemistry
- Computer Science
- Engineering
- Environmental Sciences
- Geography
- Geology
- Mathematics
- Nursing
- Nutritional Sciences
- Pathology
- Pediatrics
- Pharmacy
- Physics



*Rajina Eskridge worked in Professor David Butler's lab on a project that speeds development of tissue-engineered constructs for soft tissue repair*

Each student will work directly with a University of Cincinnati faculty mentor. Each week, all women in the program meet as a group to discuss their projects and to hear from guest speakers about a variety of topics including decisions about graduate work, giving professional talks, reading scientific journals, developing leadership skills, and other skills related to being a professional scientist. A final presentation provides an opportunity for students to participate in a professional research conference.

### Valuable Research Experience

No matter what your plans are after graduation, having hands-on experience working in a research environment will strengthen your job application or application for graduate studies.

### Spend your summer with the WISE REWU program and here's what you get:

- A \$4000 stipend
- The opportunity to do scientific/technical research in a professional environment
- Mentoring by world-class research scientists

### Research Opportunities

The University of Cincinnati's Women in Science and Engineering (WISE) Committee is looking for women students to participate in the 2008 Research Experience for Women Undergraduates (REWU) program.

### Research Areas

Projects range from examining lead and copper contamination of domestic water systems, to simulation of building semiconductors, to analyzing orbits around compact astrophysical objects and black holes. Close to one hundred faculty have suggested an enormous variety of projects from which the students may choose. In previous years, up to 20 women per year have been selected to participate. We expect to have funding for 20 new students this summer.

Undergraduates are paired with faculty mentors, and work full time for 12 weeks (June 23 – September 12, 2008). Because students are immersed in the research experience, concurrent classes or employment are not possible.

The goal of this program is to attract young women into science and engineering fields through a supportive, structured, research environment.



Students interested in learning more about WISE and the REWU program can contact:

Professor Urmila Ghia, 513-556-4612  
urmila.ghia@uc.edu

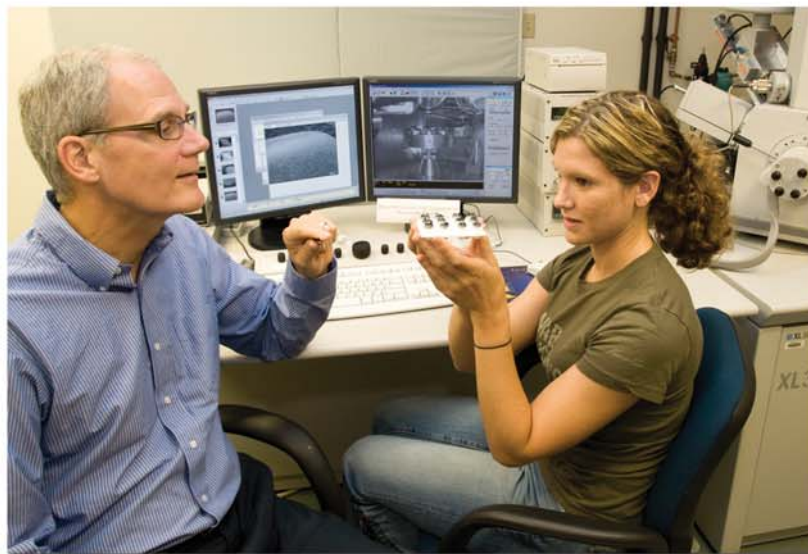
The WISE/REWU Web site at:  
[www.wise.uc.edu](http://www.wise.uc.edu)

Patrice Woerner, 513-556-0026  
Fax: 513-556-7861  
Room 240 Van Wormer  
Mail location 631  
Patrice.Woerner@uc.edu

WISE is sponsored by:  
The University of Cincinnati's  
Women in Science & Engineering (WISE)  
[www.wise.uc.edu](http://www.wise.uc.edu)

Urmila Ghia, Chair, REWU  
683 Rhodes  
Mechanical Engineering  
University of Cincinnati  
PO Box 210072  
Cincinnati, OH 45221-0072

Phone: 513.556.4612  
Fax: 513.556.3390  
urmila.ghia@uc.edu



Sally Woods, using an electron microscope, analyzed plant remains from an ancient Maya site in Belize, with her mentor Professor David Lentz

### Comments from previous REWU students

*"This program allowed me to work full time in one of the top nanotechnology research labs in the country. It also helped me shape my career goals and educational aspirations. Thanks to WISE, I will ... finish my masters."*

*"This program has opened my eyes to the graduate school process. ...I will definitely consider graduate school to earn my doctorate in pharmacy."*

*"I formed good friendships with people in my department and lab, as well as identified and shared a common experience with the girls of WISE. A more appropriate word may be 'family' or 'lifelong' friends."*

*"I consider my quarter in the WISE program to have been my best co-op position yet."*

*"I really liked the session on Women in Leadership because it was more informal, and I liked sharing our experience as a woman in STEM fields."*

*"The experience has taught me independence and it made me stronger as a person. I learned to keep failures in perspective and not take criticism personally."*

*"I learned professionalism, time management and good writing /presentation skills. I feel more dedicated to my major now and I have a new perspective on what it is like to work with a top quality research team at a prestigious University."*